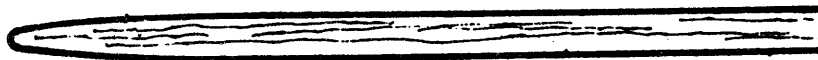


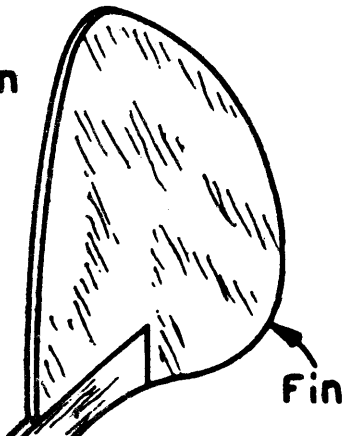
KEILKRAFT

Polaris [★] 20" SPAN CHUCK GLIDER

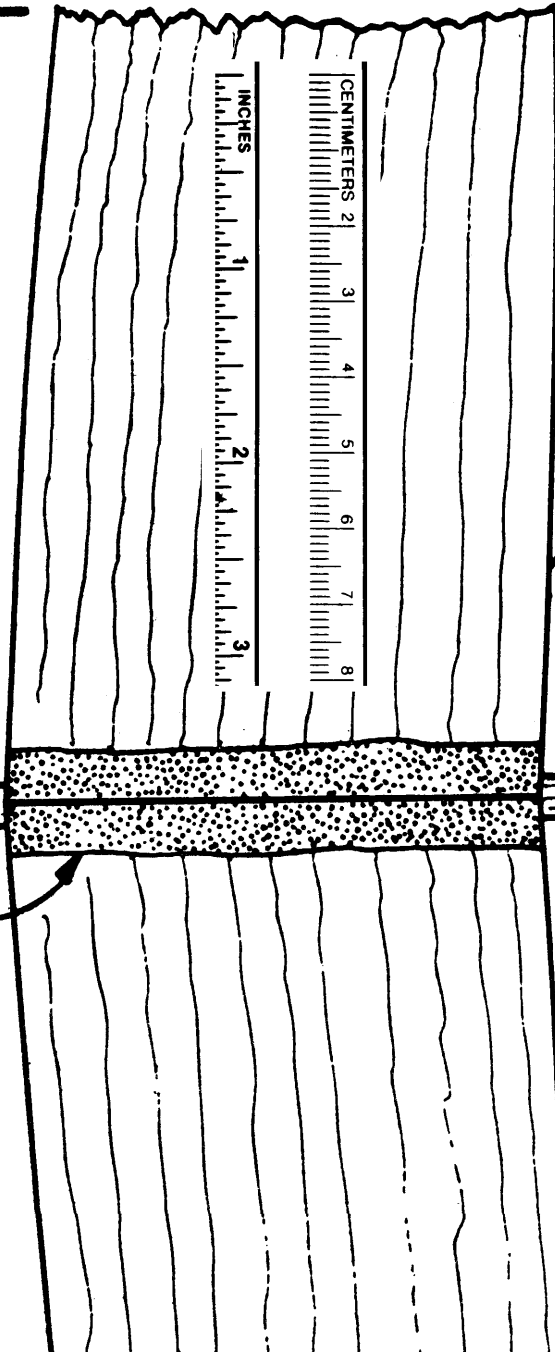
Wing Section at Root



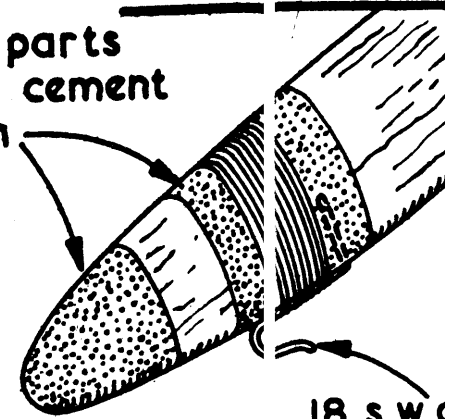
★ Cement fin to fuselage - then sand both to the sections indicated.



Cement skin



Dotted parts indicate cement skin



18 s.w.g. bound and to fus

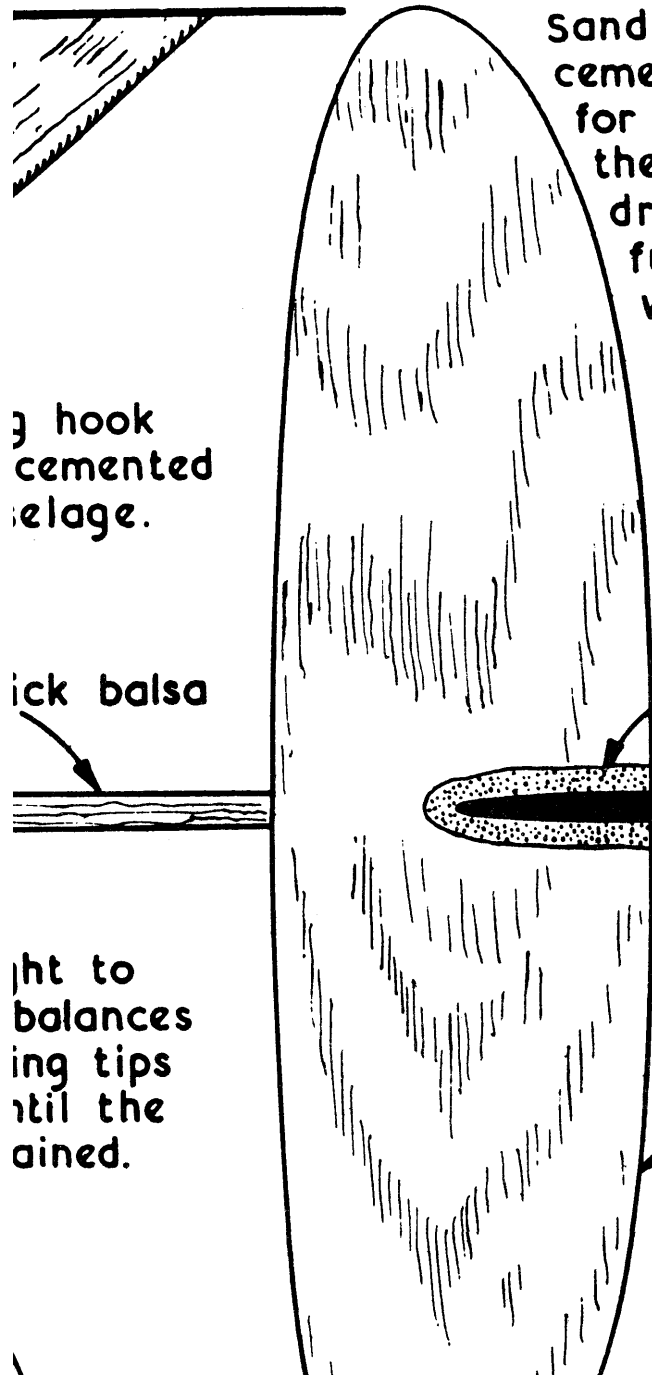
1/8 sheet Wings

Fuselage cut from 1/4" thick or 1/8" thick hardwood.

PLAN VIEW

When assembled add weight the nose until the model level when held by the wings at 'X'. Vary this weight until correct flying trim is obtained.





hook cemented to fuselage.

pick balsa

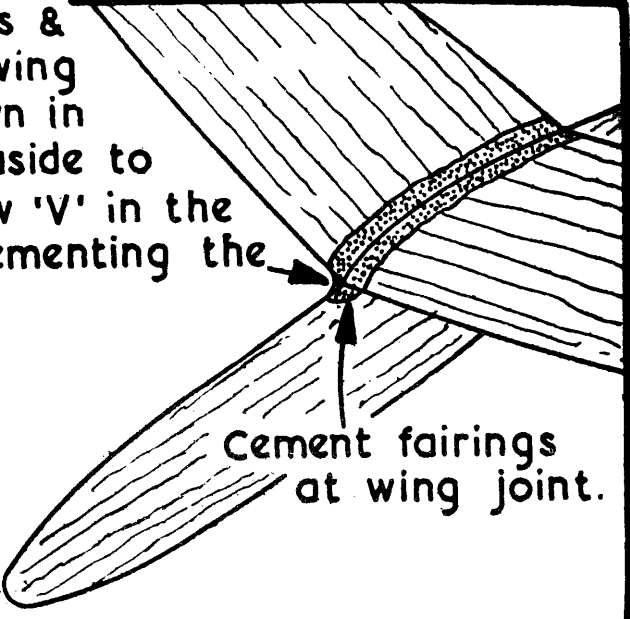
light to balances wing tips until the ained.

Sand down wing panels & cement together - allowing for the dihedral shown in the Front View. Put aside to dry. Scoop a shallow 'V' in the fuselage before cementing the wings in place.

Drawn by Albert E. Hatfield from the original



Cement skin
Fin section at base.
3/32 sheet tailplane



Cement fairings at wing joint.

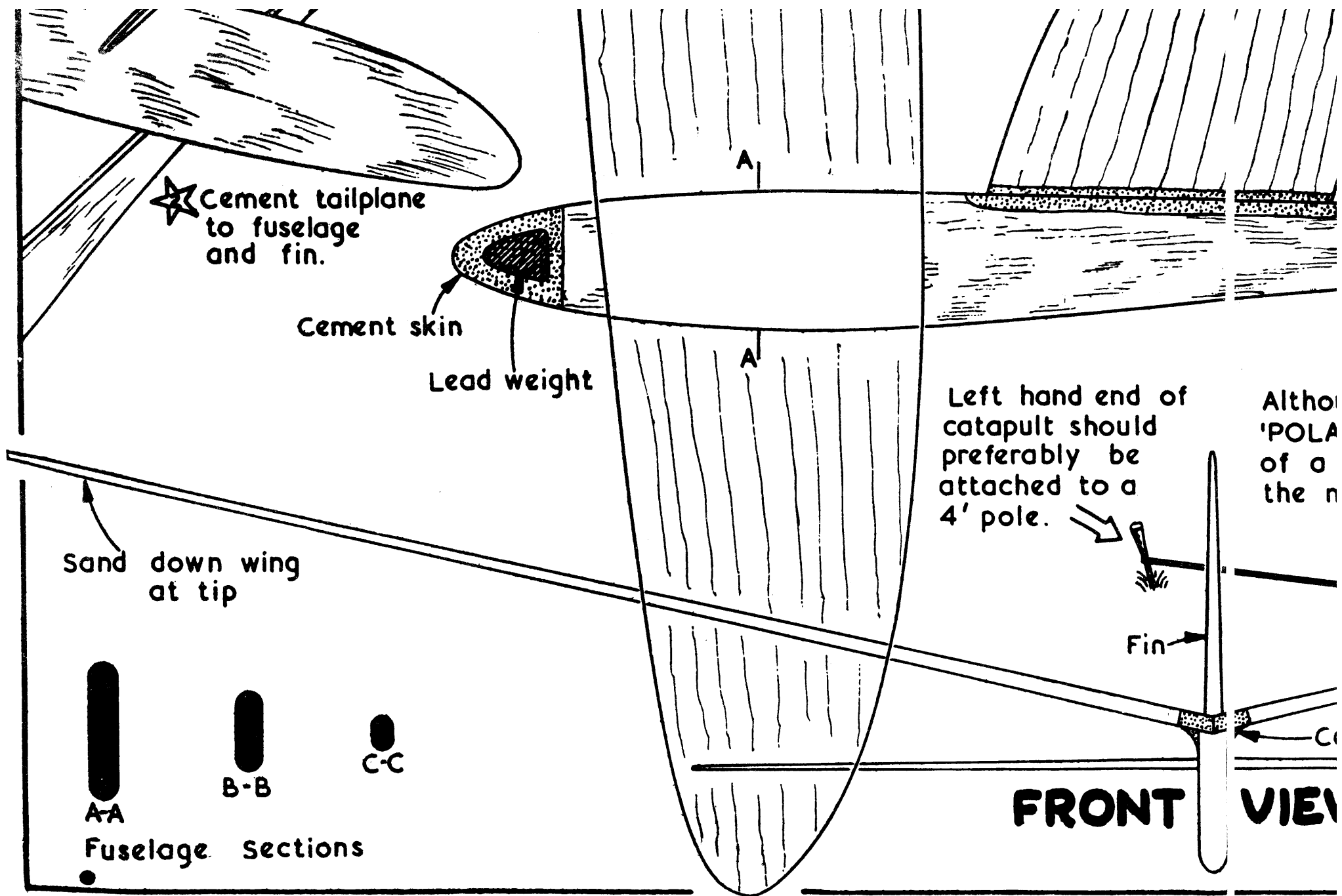
When assembled, the model is ready to fly without any treatment being given to the wood, hence no liquids are supplied in the kit. But for a super durability or exhibition model the following finish is suggested. After sanding the model all over, apply a coat of Banana Oil, this brings up all the loose particles of wood dust which are easily removed with fine sandpaper. Repeat the applications of Banana Oil 3 or 4 times, sanding between each coat with a finer grade of sandpaper. Finally, apply a coat of wax polish to obtain a glossy finish.

FLYING Trim to circle to the left, but launch in a steep right bank to achieve a figure 'S'.

4 Strands of 1/8" x 1/30"



1/8" sheet



★ Cement tailplane to fuselage and fin.

Cement skin

Lead weight

Sand down wing at tip

A-A

B-B

C-C

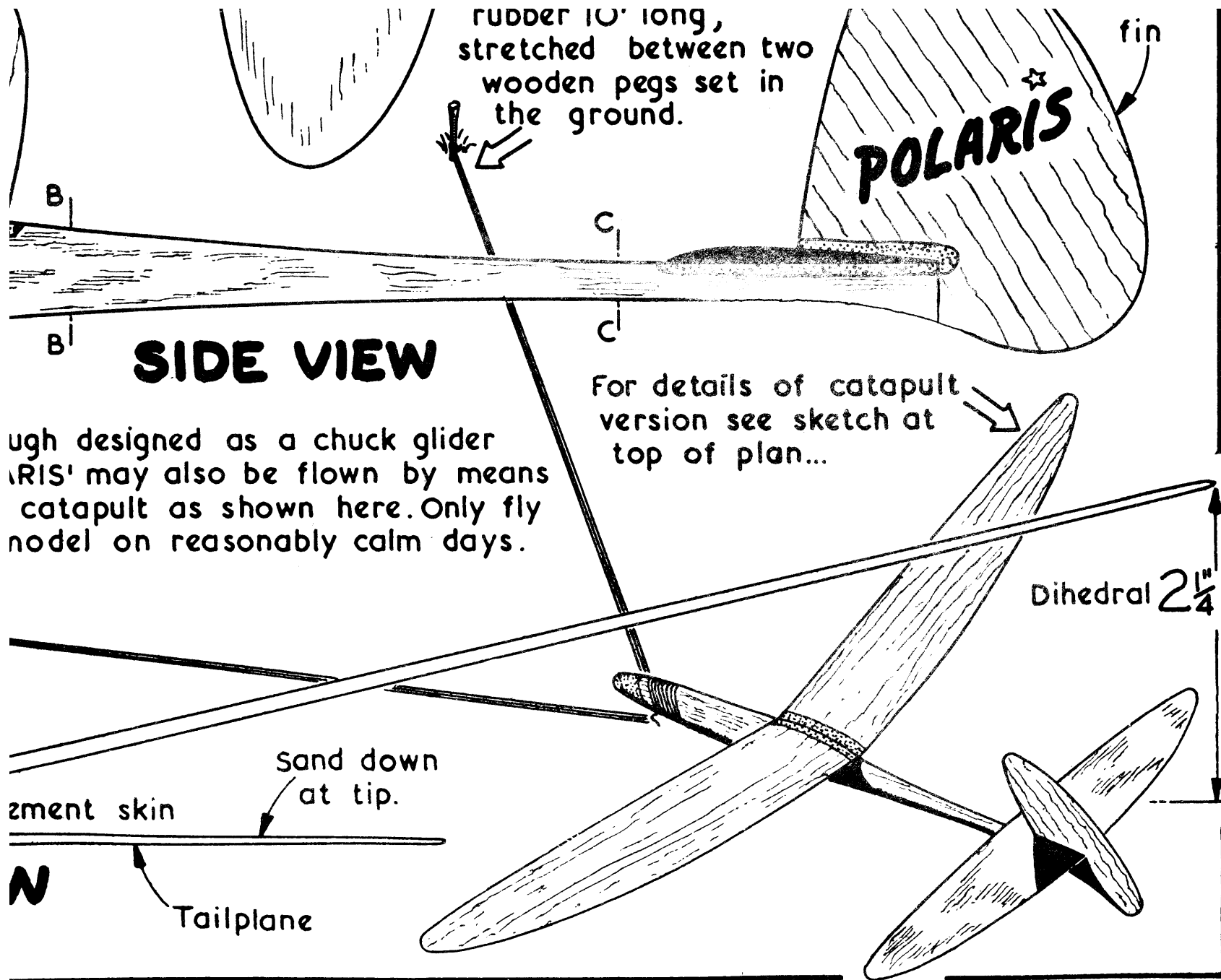
Fuselage sections

Left hand end of catapult should preferably be attached to a 4' pole.

Fin

Altho 'POLA of a the n

FRONT VIEW



RUBBER 10' long,
stretched between two
wooden pegs set in
the ground.

POLARIS ☆

fin

SIDE VIEW

ough designed as a chuck glider
'RIS' may also be flown by means
catapult as shown here. Only fly
model on reasonably calm days.

For details of catapult
version see sketch at
top of plan...

Dihedral $2\frac{1}{4}$

sand down
at tip.

zment skin

Tailplane

N